



foreground



background



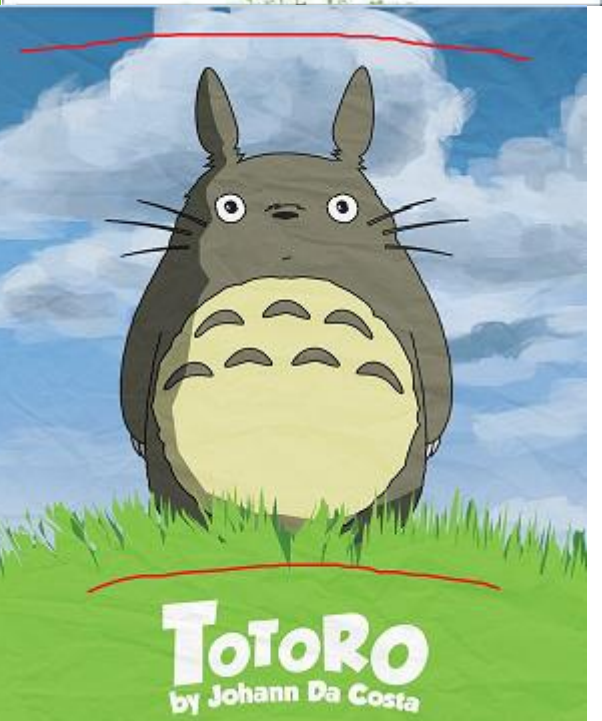
result

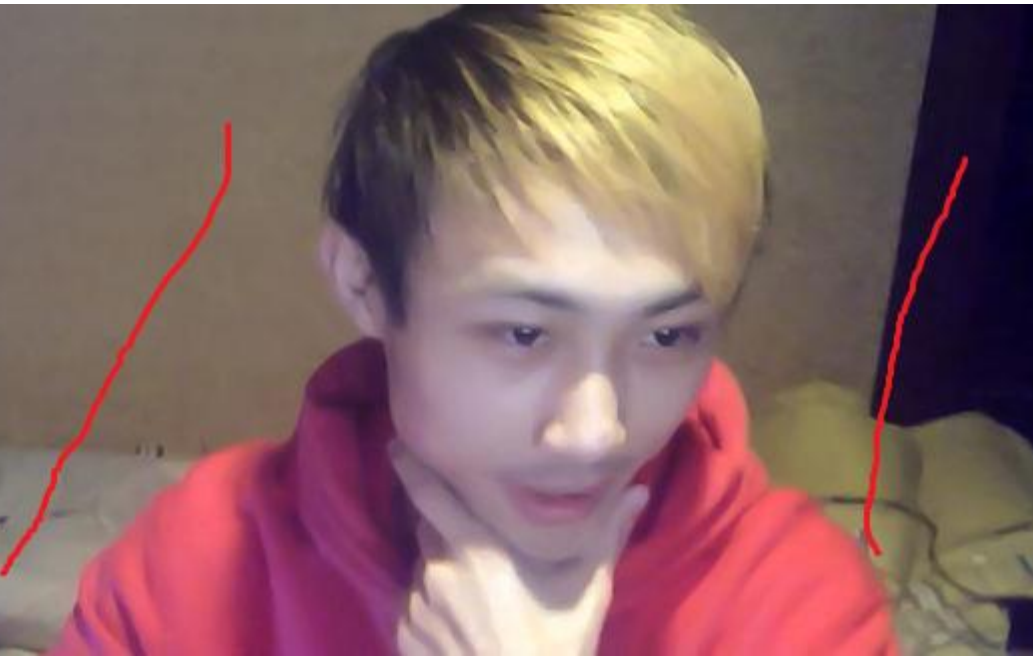
Usage: draw lines on the foreground and the background of an image to inform the program that we want to segment them.



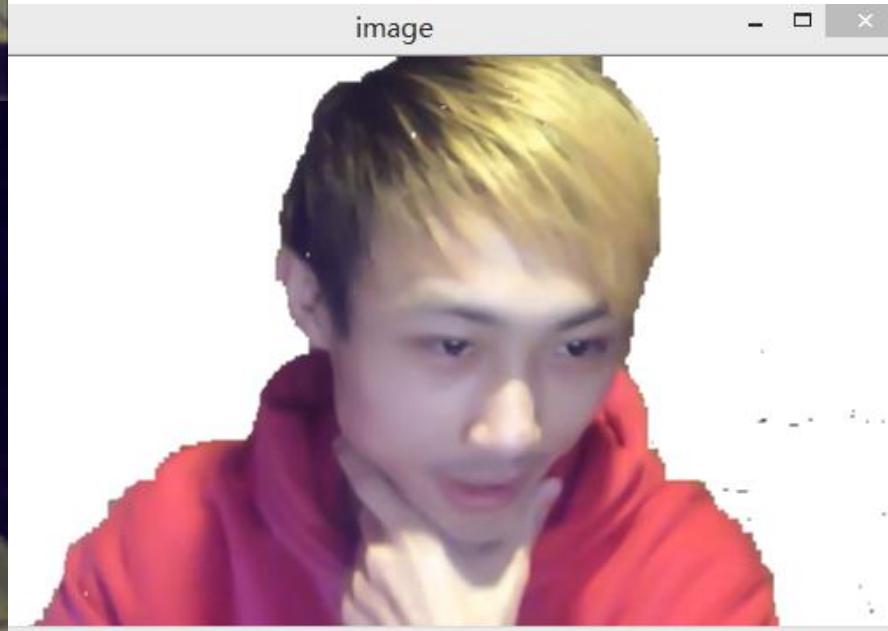
← The result of drawing one instruction line

The result of drawing more than one line





Test it on a human



Pros and Cons

- Robust than Otsu's method.
- More instruction given, segmentation works better.
- Time-wasting. It cost 10 seconds processing a 1080p image.
- The edge of foreground is rough. We may use edge detector to fix it.